



Knowledge Co-Creation Program (Group & Region Focus)

GENERAL INFORMATION ON

**School Health and Nutrition
課題別研修「学校保健・栄養」
JFY 2026**

Course No. :202514983J001

Course Period in Japan: From June 21, 2026 to July 18, 2026

This information pertains to one of the JICA Knowledge Co-Creation Program (Group & Region Focus) of the Japan International Cooperation Agency (JICA) implemented as part of the Official Development Assistance of the Government of Japan based on bilateral agreement between both Governments.

JICA Knowledge Co-Creation Program (KCCP)

The Japanese Cabinet released the Development Cooperation Charter in June 2023, which stated, *“In its development cooperation, Japan has maintained the spirit of jointly creating things that suit partner countries while respecting ownership, intentions and intrinsic characteristics of the country concerned based on a field-oriented approach through dialogue and collaboration. It has also maintained the approach of building reciprocal relationships with developing countries in which both sides learn from each other and grow and develop together.”* JICA believes that this ‘Knowledge Co-Creation Program’ will serve as a foundation of mutual learning process.

I. Concept

Background

As the world faces new challenges for public health and widening nutrition disparities, investments in school-based integrated health and nutrition approaches are said to be one of the most cost-effective interventions, contributing not only to educational, health, nutritional, and equity opportunities for children, but also to national socioeconomic efforts.

In Japan, various efforts have been systematically developed through legislation related to school health, including the assignment of healthcare-teacher (Yogo teachers), the provision of health rooms and other facilities, school health checkups, school environmental sanitation, health education, and health committee activities. In the same way, school lunch and food and nutrition education (Shoikuiku) are also based on the same legal framework, and safe and nutritionally balanced lunches are provided to children every day, with nutrition and diet teachers (Eiyo teachers) playing a central role in providing cross-curricular guidance on food and school lunch management.

These efforts contribute to the development of the qualities and abilities necessary for children to maintain and improve their physical and mental health throughout their lives. Japan's efforts, in which schools, families, and communities work together to help children grow up healthy and safe, can serve as a reference for other countries interested in school health and school nutrition.

For What?

In this program, participants will share their experiences in their own countries with other participants, learn about the systems and approaches in the field in Japan in light of international trends in school health and school nutrition, and develop appropriate school nutrition programs in their countries to improve outcomes for health, nutrition, and education of children, especially in elementary and junior high schools. The goal is to improve and promote school health and school nutrition systems appropriate to each country, with the aim of improving health, nutrition, and education outcomes for children (with a particular focus on primary and secondary schools).

For Whom?

This program is designed for central and local government officers in charge of (a) planning and implementing school health/ school nutrition, or (b) promoting community health based in school.

How?

Participants shall have opportunity to identify the critical issues to be solved on school health/ school nutrition in their countries, and formulate an action plan to be implemented by sharing knowledge and information acquired from Japan and other countries.

II. Description

1. Title: School Health and Nutrition (202514983J001)

2. Course Duration in Japan:

From June 21 to July 18, 2026

3. Target Regions or Countries

Botswana, Ghana, Indonesia, Kyrgyz, Malawi, Malaysia, Mongolia, Mozambique, Palau, Rwanda, Tanzania

4. Eligible / Target Organization

This program is designed for central and local government officers not only to plan and implement the school health/ school nutrition, but also promote the community health based in school.

(Priority organizations: Ministry of Education, Ministry of Health)

5. Capacity

11 participants

6. Language

English

7. Course Objective

To be able to improve the capacity of implementation of action plan for the improvement and promotion of school health/ school nutrition.

Reference

List of countries participated in the past

Region	2006-2023	2025	Country
Africa	87	1	Ghana
		1	Kenya
		1	Mozambique
		1	Namibia
Middle-East	15	1	Pakistan
Asia	78	1	Bangladesh
		1	Indonesia
		1	Mongolia
		1	Philippines
		1	Timor-Leste
Oceania	15	1	Marshall Islands
		1	Vanuatu
Latin America	7		
Europe	1		
Total	203	12	

8. Output and Contents:

This program consists of the following components. Details on each component are given below:

【Preliminary Phase in a participant's home country】
Inception report preparation
【Core phase in Japan】
Expected Output 1: To understand and analyze the current situation and problems of school health / school nutrition in area of responsibility. < Subjects/Agendas > Inception report presentation, International Trends in School Health and School Nutrition < Methodology > Presentation, Discussion
Expected Output 2: To understand the school health/ school nutrition policy, measures and its history in Japan. < Subjects/Agendas > The Basic Law for Children in Japan, Basic Policy on Education in Japan, Health and nutrition issues for children in Japan, School Health and School Nutrition System, History of Policies and Measures, Human Resources, Financial Resources, Monitoring and evaluation system for school health and school nutrition < Methodology > Lectures, Workshops
Expected Output 3: To understand the practical school health/ school nutrition activities and measures in Japan, and to consider the possibility of adaptation to each country. < Subjects/Agendas > Actual operation (regarding the Expected Output 2.) by visiting schools (ex) Health education, health management, Yogo teacher, School health room, Dietary education, Eiyo teacher, School lunch, Physical education, School safety, Sexual education, Mental health, etc. < Methodology > Observations
Expected Output 4: To formulate Action Plan on school health/ school nutrition in each country, considering the collaboration between the government (Ministry of Education/ Ministry of Health), school and local community, and clarifying each role. < Subjects/Agendas > Action Plan formulation < Methodology > Workshops, Discussions, Presentation

III. Conditions and Procedures for Application

1. Expectations from the Participating Organizations:

- (1) This course is designed primarily for organizations that intend to address specific issues or problems identified in their operation. Applying organizations are expected to use the program for those specific purposes.
- (2) This course is enriched with contents and facilitation schemes specially developed in collaboration with relevant prominent organizations in Japan. These special features enable the course to meet specific requirements of applying organizations and effectively facilitate them toward solutions for the issues and problems.

2. Nominee Qualifications:

Applying organizations are expected to select nominees who meet the following qualifications.

【Remarks】 Each Organizations is requested to encourage at least one female and one male candidates to apply for the course to accelerate the realization of gender equality and women' s empowerment.

Disabilities: Persons with disabilities who meet the required qualifications also have an opportunity to apply. Reasonable accommodations will be considered for participants with disabilities. Some programs of the course might have difficulty for persons with disabilities to participate due to environmental and other conditions. "Reasonable accommodation" means necessary and appropriate modification and adjustments not imposing a disproportionate or undue burden, where needed in a particular case.

(1) Essential Qualifications

- 1) **Current Duties:** be a manager or an officer in the central or local government (Priority organizations: Ministry of Education, Ministry of Health) in charge of (a) or (b), as follows:
 - (a) administration, planning and implementation of school health/ school nutrition
 - (b) promotion of community health based in school
- 2) **Experience in the relevant field:** have at least 5 years or more of experience in this field.
- 3) **Educational Background:** be a graduate of university
- 4) **Language Proficiency:** have a competent command of spoken and written English proficiency equivalent to TOEFL iBT 100 or above (This workshop includes active participation in discussions, action plan development, which requires high competence in English. Please attach an official certificate for English ability such as TOEFL, TOEIC etc, if possible)
- 5) **Computer skills:** to be proficient in Microsoft Excel and Power Point

6) **Health:** must be in good health to participate in the program in Japan. Participant's health and safety should be most respected. Pre existing conditions and pregnancy may lead to health problems that were not present prior to arriving in Japan due to stress from international travel, changes in climate, and a new living environment. In recent years, regrettable cases have occurred, including the exacerbation of symptoms after arrival and, in the case of pregnancy, stillbirth. Some participants have also incurred substantial out of pocket medical costs. If any of the conditions below may apply, please take a moment to consider whether to participate, and continue after confirming your agreement to the points below.

① Questionnaire

("QUESTIONNAIRE ON MEDICAL STATUS AND RESTRICTION")

If any of the following apply, you must state them accurately in the questionnaire, even if they do not affect your current work or daily life.

- a. Chronic diseases (e.g., hypertension, diabetes)
- b. Conditions currently under treatment
- c. Past illnesses that have resolved (including serious conditions affecting the heart, liver, or brain; tuberculosis, etc.)
- d. Pregnancy (for female applicants)

② Medical certificate

Please submit a medical certificate issued by a doctor that your condition is stable and that, from a medical standpoint, there is no problem with your participation in KCCP in Japan.

Applicable cases:

- a. Chronic diseases (e.g., hypertension, diabetes)
- b. Conditions currently under treatment
- c. Past illnesses that have resolved (including serious conditions affecting the heart, liver, or brain; tuberculosis, etc.)

③ Reporting changes

If pregnancy or any health issues are identified after submitting the form, please report them to JICA promptly.

④ Insurance coverage

Medical and additional living expenses related to pregnancy and pre existing conditions are NOT covered by insurance arranged by JICA. Such costs must be borne entirely by the participant; JICA assumes no liability.

* Please understand that insurance coverage applies only to sudden illness or injury occurring during your stay in Japan.

* Medical expenses in Japan could be a significant financial burden when not covered by insurance.

(2) Recommendable Qualifications

1)**Age:** between the ages of thirty(30) and fifty(50) years

2)**Gender Equality and Women's Empowerment:**

JICA seeks more female applicants due to the past records of fewer applications from women. JICA is committed to promoting gender equality and women's empowerment, and provides equal opportunities for all applicants regardless of their sexual orientation or gender identity.

3. Required Documents for Application

(1) Application Form: The Application Form is available at **the JICA overseas office (or the Embassy of Japan)**. Please submit a type-written application form.

* If you have any difficulties/disabilities which require assistance, please specify necessary assistances in the QUESTIONNAIRE ON MEDICAL STATUS RESTRICTION (1-(c)) of the application form. Information will be reviewed and used for reasonable accommodation.

(2) Photocopy of Passport: You should submit it with the application form if you possess your passport which you will carry when entering Japan for this program. If not, you are requested to submit its photocopy as soon as you obtain it.

*The following information should be included in the photocopy:

Name, Date of Birth, Nationality, Sex, Passport Number and Expiry Date

*It is recommended that your passport be valid for more than 6 months after the last day of the program.

(3) English Score Sheet: to be submitted with the application form, if the nominees have any official English examination scores. (e.g., TOEFL, TOEIC, IELTS)

(4) Questionnaire: to be submitted with the application form. Fill in Annex of this General Information.

4. Procedure for Application and Selection

(1) Submission of the Application Documents:

Closing date for applications: **Please confirm the local deadline with the JICA overseas office (or the Embassy of Japan).**

All required material must arrive at JICA Center in Japan by May 01, 2026.

(2) Selection:

Primary screening is conducted at the JICA overseas office (or the embassy of Japan) after receiving official documents from your government. JICA Chubu will consult with concerned organizations in Japan in the process of final selection. Applying organizations with the best intentions to utilize the opportunity will be highly valued.

The Government of Japan will examine applicants who belong to the military or other military-related organizations and/or who are enlisted in the military, taking into consideration of their duties, positions in the organization and other relevant information in a comprehensive manner to be consistent with the Development Cooperation Charter of Japan.

(3) Notice of Acceptance

The JICA overseas office (or the Embassy of Japan) will notify the results **not later than May 21, 2026.**

5. Additional Document to be submitted by Accepted Candidates

Accepted candidates are required to prepare an Inception Report before their departure. Detailed instructions will be attached to the notice of acceptance.

6. Conditions for Participation

The participants of KCCP are required

- (1)** to strictly observe the course schedule,
- (2)** not to change the air ticket (and flight class and flight schedule arranged by JICA) and lodging by the participants themselves,
- (3)** to understand that leaving Japan during the course period (to return to home country, etc.) is not allowed (except for programs longer than one year),
- (4)** not to bring or invite any family members (except for programs longer than one year),
- (5)** to carry out such instructions and abide by such conditions as may be stipulated by both the nominating Government and the Japanese Government in respect of the course,
- (6)** to observe the rules and regulations of the program implementing partners to provide the program or establishments,
- (7)** not to engage in political activities, or any form of employment for profit,
- (8)** to discontinue the program, should the participants violate the Japanese laws or JICA's regulations, or the participants commit illegal or any type of immoral conduct including sexual harassment, or get critical illness or serious injury and be considered unable to continue the course. The participants shall be responsible for paying any cost for treatment of the said health conditions except for the medical care stipulated in (3) of "5. Expenses", "IV. Administrative Arrangements",
- (9)** to return the total amount or a part of the expenditure for the KCCP depending on the severity of such violation, should the participants violate the laws and ordinances,
- (10)** not to drive a car or motorbike, regardless of an international driving license possessed,
- (11)** to observe the rules and regulations at the place of the participants'

accommodation, and

(12) to refund allowances or other benefits paid by JICA in the case of a change in schedule.

(13) to promptly notify JICA in the case that there are any changes in the health status since the time of application (such as changes requiring medical attention due to illness or discovery of pregnancy).

IV. Administrative Arrangements

1. Organizer

(1) **Center:** JICA Chubu

(2) **Program Officer:** Ms. SAITO Mihoko (Saito.Mihoko@jica.go.jp),
JICA Chubu (cbictp1@jica.go.jp)

※Please insert “Course number & the title” in the subject when emailing.

For instance, “202514983J001 & School Health and Nutrition”

2. Travel to Japan

(1) **Air Ticket:** In principle, JICA will arrange an economy-class round-trip ticket between an international airport designated by JICA and Japan.

(2) **Travel Insurance:** Coverage is from time of arrival up to departure in Japan. Thus, traveling time outside Japan (include damaged baggage during the arrival flight to Japan) will not be covered.

3. Accommodation in Japan

JICA will arrange the following accommodation(s) for the participants in Japan:

JICA Chubu Center (JICA CHUBU)

Address: 4-60-7 Hiraike-cho, Nakamura-ku, Nagoya 453-0872, JAPAN

Phone: +81-52-533-0220

(where “81” is the country code for Japan, and “52” is the local area code)

If there is no vacancy at JICA CHUBU, JICA will arrange alternative accommodation for the participants.

4. Expenses

The following expenses in Japan will be provided by JICA:

(1) Allowances for meals, living expenses, and stopover.

(2) Expenses for study tours (basically in the form of train tickets).

(3) Medical care for participants who become ill after arriving in Japan (the costs related to pre-existing illness, pregnancy, or dental treatment are not included).

(4) Expenses for program implementation, including materials.

(5) For more details, please see “III. ALLOWANCES” of “KENSHU-IN GUIDEBOOK”.

*Link to JICA HP (English/French/Spanish/Russian):

https://www.jica.go.jp/english/our_work/types_of_assistance/tech/acceptance/training/index.html

5. Pre-departure Orientation:

A pre-departure orientation will be held at respective country’s JICA office (or the

Japanese Embassy), to provide Participants with details on travel to Japan, conditions of the course, and other matters.

*YouTube of “Knowledge Co-Creation Program and Life in Japan” and “Introduction of JICA Center” are viewable from the link below.

Image videos of 'Introduction of JICA Center (YouTube)' show the following information of JICA Centers: Location, Building, Entrance, Reception(Front desk), Lobby, Office, Accommodation(Room), Amenities(Hand dryer), Bathroom(Shower and Toilet), Toiletries, Restaurant, Laundry Room(Washing machine, Iron), ICT Room(Computer for participants), Clinic, Cash dispenser, Gym, Neighborhood

Part I: Knowledge Co-Creation Program and Life in Japan	
English ver.	https://www.youtube.com/watch?v=SLurfKugrEw
Part II: Introduction of JICA Centers in Japan	
JICA Chubu	https://www.jica.go.jp/chubu/english/office/index.html

V. Other Information

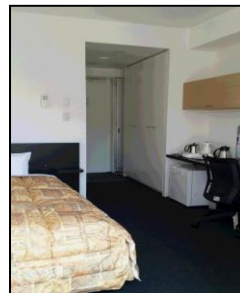
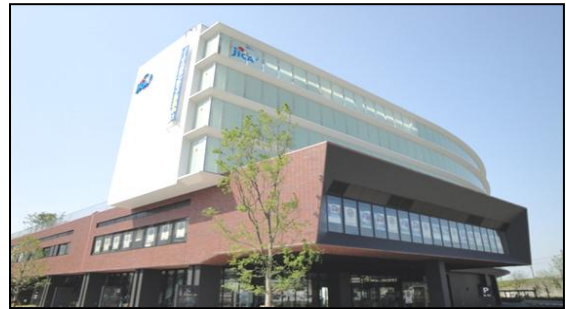
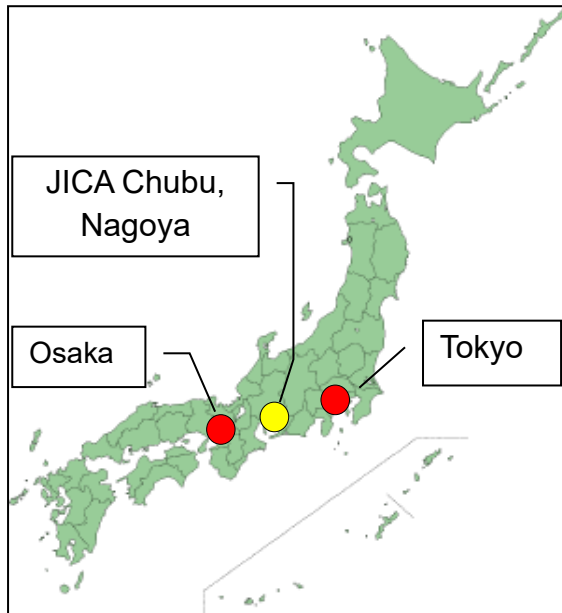
About JICA Chubu Center:

<Location>

- It is located at the center of Nagoya-city. The Nagoya main station, the regional hub of various transports, is 15mins walk from JICA Chubu Center.

<Facilities/Equipment>

- Cafe/Restaurant: International Foods, including vegetarian and halal meals, are available.
- Private Room: Single size Bed, Private Bathroom, Desk, Refrigerator, Hot pot, Bookshelf, Air Conditioning, In-room Safe, TV, Internet connection (LAN)



<Climate>

Monthly Average Temperature in Nagoya (2025)

	June	July
Daytime (°C)	29.5	34.5
Nighttime (°C)	21.3	25.8

VI. ANNEX:

Annex

School Health and Nutrition (202514983J001) Questionnaire

This report should be typed in English, and be (A4 size) 2 pages.

1. Basic Information

Name of Nominee	
Country	
Organization	
Department/ Division	
Position	
E-mail	

2. Job Description

- (1) Your current 3 main duties and responsibilities in your organization
- (2) School Health and Nutrition activities you have worked on in the past
- (3) On going School Health and Nutrition projects in your area of responsibility
- (4) Key challenges currently faced in your work/activities

3. Subjects you're interested in the course in Japan

4. Message or request to JICA Chubu (if any)

5. Organization Chart

*Attach your organization chart and indicate your department/ division.

END

For Your Reference

JICA and Capacity Development

Technical cooperation is people-to-people cooperation that supports partner countries in enhancing their comprehensive capacities to address development challenges by their own efforts. Instead of applying Japanese technology per se to partner countries, JICA's technical cooperation provides solutions that best fit their needs by working with people living there. In the process, consideration is given to factors such as their regional characteristics, historical background, and languages. JICA does not limit its technical cooperation to human resources development; it offers multi-tiered assistance that also involves organizational strengthening, policy formulation, and institution building.

Implementation methods of JICA's technical cooperation can be divided into two approaches. One is overseas cooperation by dispatching experts and volunteers in various development sectors to partner countries; the other is domestic cooperation by inviting participants from developing countries to Japan. The latter method is the Knowledge Co-Creation Program, formerly called Training Program, and it is one of the core programs carried out in Japan. By inviting officials from partner countries and with cooperation from domestic partners, the Knowledge Co-Creation Program provides technical knowledge and practical solutions for development issues in participating countries.

The Knowledge Co-Creation Program (Group & Region Focus) has long occupied an important place in JICA operations. About 400 pre-organized courses cover a wide range of professional fields, ranging from education, health, infrastructure, energy, trade and finance, to agriculture, rural development, gender mainstreaming, and environmental protection. A variety of programs is being customized by the different target organizations to address the specific needs, such as policy-making organizations, service provision organizations, as well as research and academic institutions. Some programs are organized to target a certain group of countries with similar developmental challenges.

Japanese Development Experience

Japan, as the first non-Western nation to become a developed country, built itself into a country that is free, peaceful, prosperous and democratic while preserving its tradition. Japan will serve as one of the best examples for our partner countries to follow in their own development.

From engineering technology to production management methods, most of the know-how that has enabled Japan to become what it is today has emanated from a process of adoption and adaptation, of course, has been accompanied by countless failures and errors behind the success stories.

Through Japan's progressive adaptation and application of systems, methods and technologies from the West in a way that is suited to its own circumstances, Japan has developed a storehouse of knowledge not found elsewhere from unique systems of organization, administration and personnel management to such social systems as the livelihood improvement approach and governmental organization. It is not easy to apply such experiences to other countries where the circumstances differ, but the experiences can provide ideas and clues useful when devising measures to solve problems.

JICA, therefore, would like to invite as many leaders of partner countries as possible to come and visit us, to mingle with the Japanese people, and witness the advantages as well as the disadvantages of Japanese systems, so that integration of their findings might help them reach their developmental objectives.



Contact Information for Inquiries

For inquiries and further information, please contact the JICA overseas office or the Embassy of Japan. Further, address correspondence to:

JICA Chubu Center (JICA CHUBU)